

HDMI EXTENDER

AVLINK™



**HDM-E2
(LOCAL)**



**HDM-E4
(LOCAL)**

USER MANUAL HDM-E2 / HDMI-E4

Package Contents-

- 1x HDM-E2 or HDM-E4 Unit
- 1x user manual
- 1x Power adapter DC12V
- 2x screws
- 4x foot pads
- 1x Power cord (only HDM-E4)

Any thing missed, please contact with your vendor.

Features

Through the HDMI Extender, you can use DVD to display identical image and extension of HDMI signal up to 100 meter on HDTV

- Supports 3D pass-through
- Two or Four CAT.5e/CAT.6 cable extension
- HDCP Compliant
- Compliant with the specification of HDMI
- Support high-resolution display up to 4Kx2K@30Hz
- Use CAT.5e/CAT.6 cable to install easily

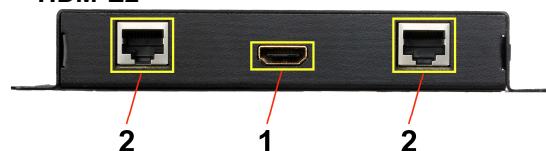
Resolution	Cable Type	HDM-E2	HDMI-E4
1080P(12bit)	Cat5e	100M	100M
4K@30	Cat5e	70M	70M
	Cat6a/Cat7	100M	100M

Specifications

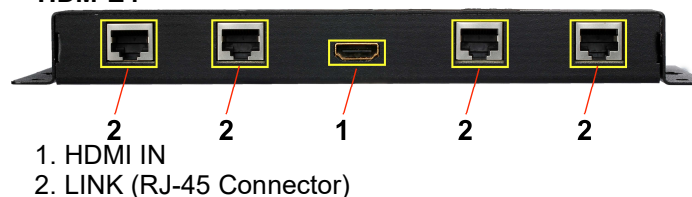
Function	HDM-E2	HDM-E4
HDMI In Connector	HDMI A-Type Female x 1	HDMI A-Type Female x 1
RJ-45 Connector	2	4
Max. Resolution	4K@30	
Cable Distance	100 m	100 m
Power Adapter (Min.)	DC12V/1.25A with lock	DC12V/5A with lock
Housing	Metal	
Weight	480g	710g
Dimensions (LxWxH)	171x120x25 mm	240x120x25 mm

LOCAL FRONT VIEW

HDM-E2



HDM-E4



- HDMI IN
- LINK (RJ-45 Connector)

LOCAL REAR VIEW

HDM-E2



HDM-E4



- Reset
- Mode(must reset)

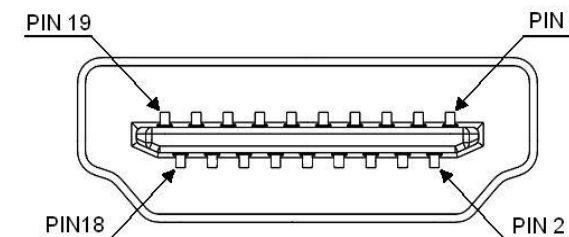
1	2	Mode
OFF	OFF	1080P
OFF	ON	Copy Out1
ON	OFF	Reserved
ON	ON	4K x 2K

- 1~2/1~4 Out port LED
- 4-IN-1 LED
(POWER LED · HDMI IN LED · HDCP LED · N/A)
- Power jack (12V DC)

Installation

- Turn off the DVD and HDTV.
- Connect the HDMI cable between the DVD and the "HDMI IN" port of HDM-E2 or HDM-E4.
- Connect the CAT.5e/ CAT.6 cables between the HDM-E2 or HDM-E4 "OUT" port and the source device of extender.
- Connect the power cord and turn on the extender.
- Turn on the DVD and HDTV.

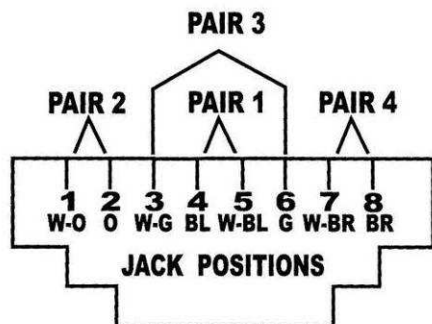
Technical Specifications Output Signal



Pin #	Signal	Pin #	Signal
1	TMDS Data 2+	11	TMDS Clock Shield
2	TMDS Data 2 Shield	12	TMDS Clock -
3	TMDS Data 2-	13	CEC
4	TMDS Data 1+	14	Reserved (N.C. on device)
5	TMDS Data 1 Shield	15	SCL
6	TMDS Data 1-	16	SDA
7	TMDS Data 0+	17	DDC/CEC Ground
8	TMDS Data 0 Shield	18	+5V Power
9	TMDS Data 0-	19	Hot Plug Detect
10	TMDS Clock+		

Wiring Information & Coding

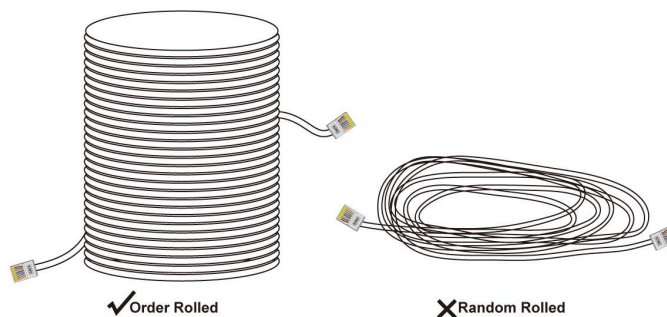
Conductor Identification	RJ45 Pin Assignment	Color Code for Conductor
Pair 1	5	White-Blue
	4	Blue
Pair 2	1	White-Orange
	2	Orange
Pair 3	3	White-Green
	6	Green
Pair 4	7	White-Brown
	8	Brown



Note

However sometimes, especially in demonstrations or in a lab environment, the cable is rolled randomly in small turns for convenience. The randomly rolled UTP cable suffers additional signal impairments (compared to a straight cable) and therefore the maximal operating reach might be reduced.

Rolling a CAT5E/CAT6 cable around a 70cm fixed diameter plastic drum has just a minor effect on the FEXT (Far End Cross Talk) when compared to a fully stretched cable.



© C&C TECHNIC TAIWAN CO., LTD. All rights reserved.

Trademarks:

All the companies, brand names, and product names referred to this manual are the trademarks or registered trademarks belonging to their respective companies.