

HDMI Distribution Amplifier

AVLINK™



(HS-1512PW)
1 In 2 Out



(HS-1514PW)
1 In 4 Out



(HS-1518PW)
1 In 8 Out

USER MANUAL

HS-1512PW/HS-1514PW /HS-1518PW

V1.1

Package Contents-

- 1x AVLINK HS-1512PW or HS-1514PW or HS-1518PW HDMI Distribution Amplifier
- 1x User Manual
- 1x Power Adapter DC 12V
- AC POWER cord (only HS-1518PW)
- 2x Screws
- 4x Foot Pads

Anything missed, please contact with your vendor.

Introduction

Through the HDMI Distribution Amplifier, you can use one HDMI source such as DVD player to display / broadcast the identical image up to 8 projectors or HDTVs through HDMI ports.

HDMI Distribution Amplifier is ideal for:

- Test Bench Facilities
- Data Centers
- Help Desks

Features

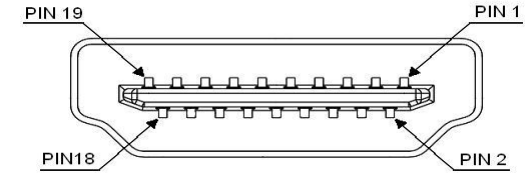
- Supports 3D
- HDCP2.2/HDCP1.4 Compliant
- Compliant with the specification of HDMI
- Support high-resolution display up to 4Kx2K@60Hz(YCbCr 4:2:0 8/10/12/16-bit other 8-bit)
- EDID copy from OUT 1
- Cascade able to satisfy the demanded ports

Specifications

Function	HS-1512PW	HS-1514PW	HS-1518PW
HDMI Input Connector (A-Type Female)	1		
HDMI Output Connector (A-Type Female)	2	4	8
Max. Resolution	4x2K@60Hz		
Cable Distance (Device to Monitor)	10 m (Max.)		
Signal Type	Standard HDMI Signal		
Power Adapter (Min.)	DC 12V/1.25A		DC12V/5A
Housing	Metal		
Weight	280g	476g	700g
Dimensions (LxWxH)	150x80x25 mm	171x120x25 mm	240x120x25 mm

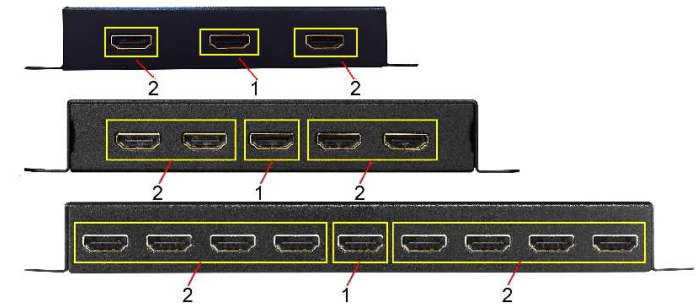
Technical Specifications

Input/Output Signal



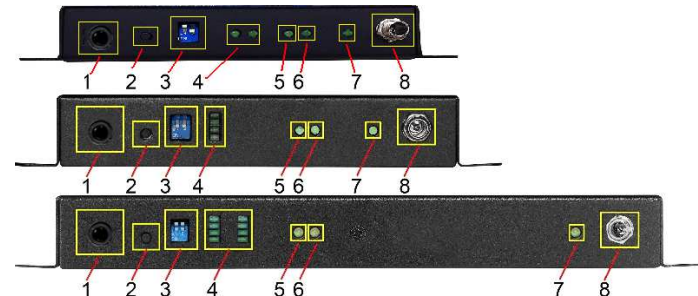
Pin #	Signal	Pin #	Signal
1	TMDS Data 2+	11	TMDS Clock Shield
2	TMDS Data 2 Shield	12	TMDS Clock -
3	TMDS Data 2-	13	CEC
4	TMDS Data 1+	14	Reserved (N.C. on device)
5	TMDS Data 1 Shield	15	SCL
6	TMDS Data 1-	16	SDA
7	TMDS Data 0+	17	DDC/CEC Ground
8	TMDS Data 0 Shield	18	+5V Power
9	TMDS Data 0-	19	Hot Plug Detect
10	TMDS Clock+		

FRONT VIEW



- "HDMI In" Port
- "HDMI Out" Port

REAR VIEW



1. F/W Upgrade
2. Reset
3. Mode(must reset)

1	2	Mode
OFF	OFF	1080P
OFF	ON	Copy Out1
ON	OFF	Reserved
ON	ON	4K x 2K

4. 1~2/1~4/1~8 Out port LED
5. HDCP LED
6. HDMI In LED
7. Power LED
8. DC 12V Input

Installation

1. Turn off the HDMI source and HDMI displays.
2. Connect the HDMI male extension cable between the HDMI source and the “HDMI In” port of Distribution Amplifier.
3. Connect the HDMI male/female extension cables between the displays and the “HDMI Out” ports of Distribution Amplifier.
4. Connect the power cord and turn on the Distribution Amplifier.
5. Turn on the HDMI source and HDMI displays.

Note:

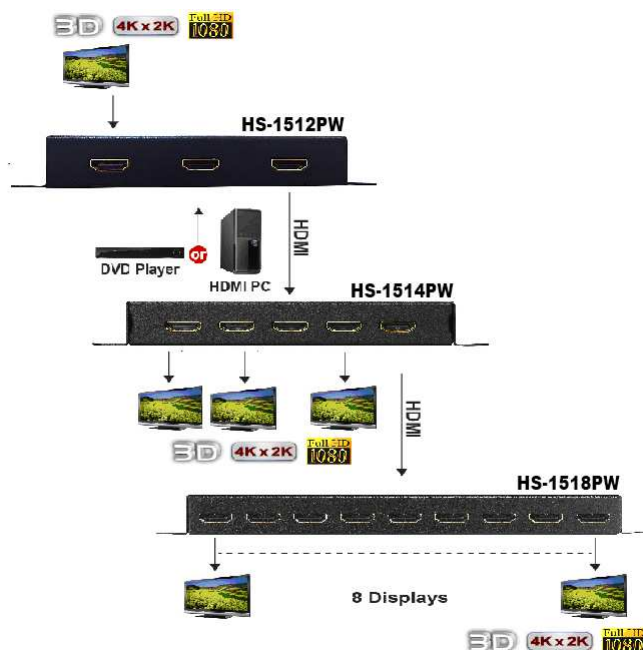
- Have to set ALL displays with the same resolution.
- We suggest the user connects the display from “HDMI Out 1” first because the Distribution Amplifier will simulate the EDID from “HDMI Out 1”.
- We suggest the user connects the HDMI source to the Distribution Amplifier via 1.8M cable for the better video quality.

Operation for cascade:

1. The function to display identical image on more displays, you have to attach another Distribution Amplifier.
2. Connect the HDMI male/female extension cable between the “HDMI Out 1” port of 1st level Distribution Amplifier and the “HDMI In” port of 2nd level Distribution Amplifier.

Note:

Even though you are allowed to cascade more Distribution Amplifiers to satisfy demanded ports, the image might become unstable if cascade too many levels of Distribution Amplifiers.



P.S.: The example of cascading the 2/4 and 8 ports Distribution Amplifier. Better yet, you can cascade more Distribution Amplifiers to satisfy demanded ports.

© C&C TECHNIC TAIWAN CO., LTD. All rights reserved.

Trademarks:

All the companies, brand names, and product names referred to this manual are the trademarks or registered trademarks belonging to their respective companies.