

MaitreView™ 4KPlus

Quick Start Guide



QSG-MaitreView™ 4KPlus-v1.1

BEFORE YOU BEGIN

- Follow all instructions marked on the device during use.
- Provide proper ventilation and air circulation and do not use near water.
- It is better to keep it in a dry environment.
- Place the device on a stable surface (for example cart, stand, table, etc.).
- The system should be installed indoors only. Install either on a sturdy rack or desk in a well-ventilated place.
- Make sure the rack is level and stable before extending a device from the rack if necessary.
- Make sure all equipment installed on the rack including power strips and other electrical connectors are properly grounded.
- Only use the power cord supported by the device.
- Do not use liquid or aerosol cleaners to clean the device.
- Always unplug the power to the device before cleaning.
- Unplug the power cord during lightning or after a prolonged period of non-use to avoid damage to the equipment.
- Do not stand on any device while installing the device to the rack.
- Do not attempt to maintain the device by yourself. For any faults, please contact your vendor.
- Save this manual properly for future reference.

COPYRIGHT AND TRADEMARKS

All rights reserved by AV LINK GROUP LTD. No part of this document may be reproduced in any form or by any means without written permission from the product manufacturer. Changes are periodically made to the information in this document. They will be incorporated in subsequent editions. The product manufacturer may make improvements and changes in the product described in this document at any time.

(Note: If there is any discrepancy with the latest version, please refer official website as the primary source of Information)

CONTACT INFORMATION

AV LINK GROUP LTD.

Headquarters: 13F.-1, No. 2, Jian 8th Rd., Zhonghe Dist., New Taipei City 235, Taiwan (R.O.C.)

TEL: 886-2-8226-2268

FAX: 886-2-8226-2269

E-mail: sales@cctch.com.tw

Website: <https://avlinksystem.com>



For Warranty:

Please follow the warranty policy according to AV LINK's local official distributor; during the warranty period, it is recommended to keep your proof of purchase, accessories, and packaging in place.

OVERVIEW

Thank you for purchasing AV LINK's Multi-window Video Processor. The MaitreView™ 4KPlus is a true 4K HDMI Video Processor that can generate powerful uncompressed 4K video algorithms driving on FPGA. It allows up to 4 HDMI inputs and 2 HDMI outputs with independent layouts on each output. It's flexible to most scenarios for conferencing and collaborative work, where inputs and outputs support uncompressed 4K / 60Hz 4:4:4 (18 Gbps bandwidth) that never loses any details on important data. It offers flexible control of the Web GUI (Graphical User Interface), tablet application, front buttons, RS-232, and APIs (Application Programming Interfaces). This quick start guide will introduce basic functions to get started with the MaitreView™ 4KPlus.

APPLICATIONS

The MaitreView™ 4KPlus is a powerful device that can be used in:

- Corporate
- Design House
- Education
- Entertainment
- E-Sport
- Fashion
- Government
- Health Care
- House of worship
- Retail

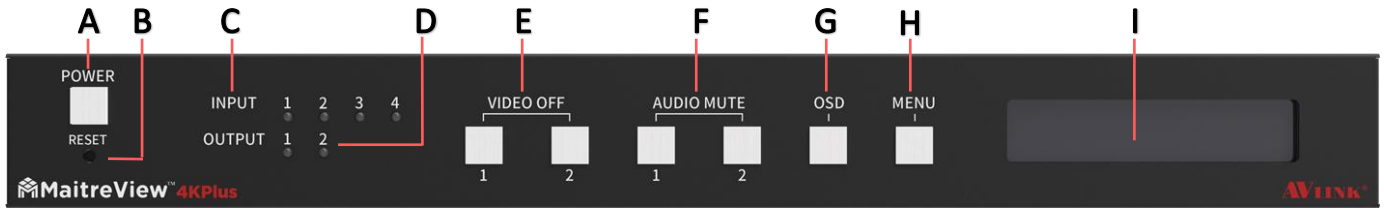
And any application which requires seamless switching and powerful video processing.

FEATURES

- 4K/60Hz multi-window video processor
- 4 HDMI 2.0 inputs and 2 HDMI 2.0 outputs
- All inputs and outputs support up to UNCOMPRESSED 4K/60Hz 4:4:4 (18 Gbps bandwidth)
- Seamless switching between multiple sources
- Real-time drag and drop to deploy layouts
- Independent layout processing on each output
- 4 split layers (4K) on each output
- OSD - On-Screen Display to identify input sources on output screens

PANEL DESCRIPTION

Front Panel



A POWER

Press to power on / off the device

B RESET

Long press over 5 seconds to reset the device to default

C INPUT 1~4

Shows connection for input 1~4

D OUTPUT 1~2

Shows connection for output 1~2

E VIDEO OFF

Press to enable / disable video for output 1~2

F AUDIO MUTE

Press to enable / mute audio for output 1~2

G OSD

Press to enable / disable OSD for outputs 1~2

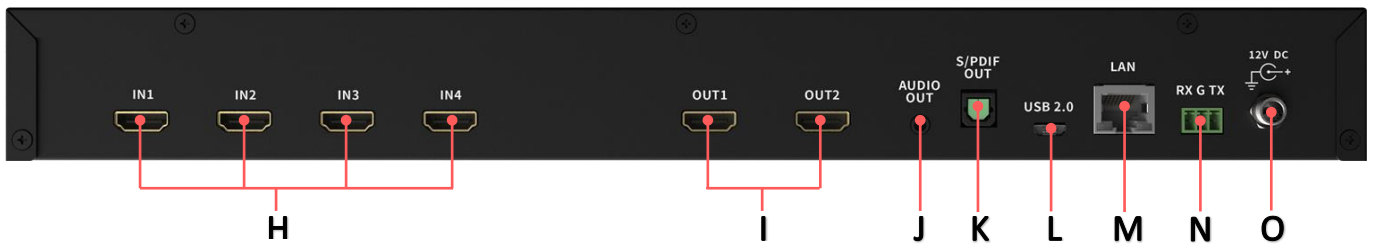
H MENU

Press to switch the device information shown on LCM

I LCM

LCM shows the IP address and system version, resolution of output 1~2, and status of the device information (booting, shutting down, upgrading, resetting, error code)

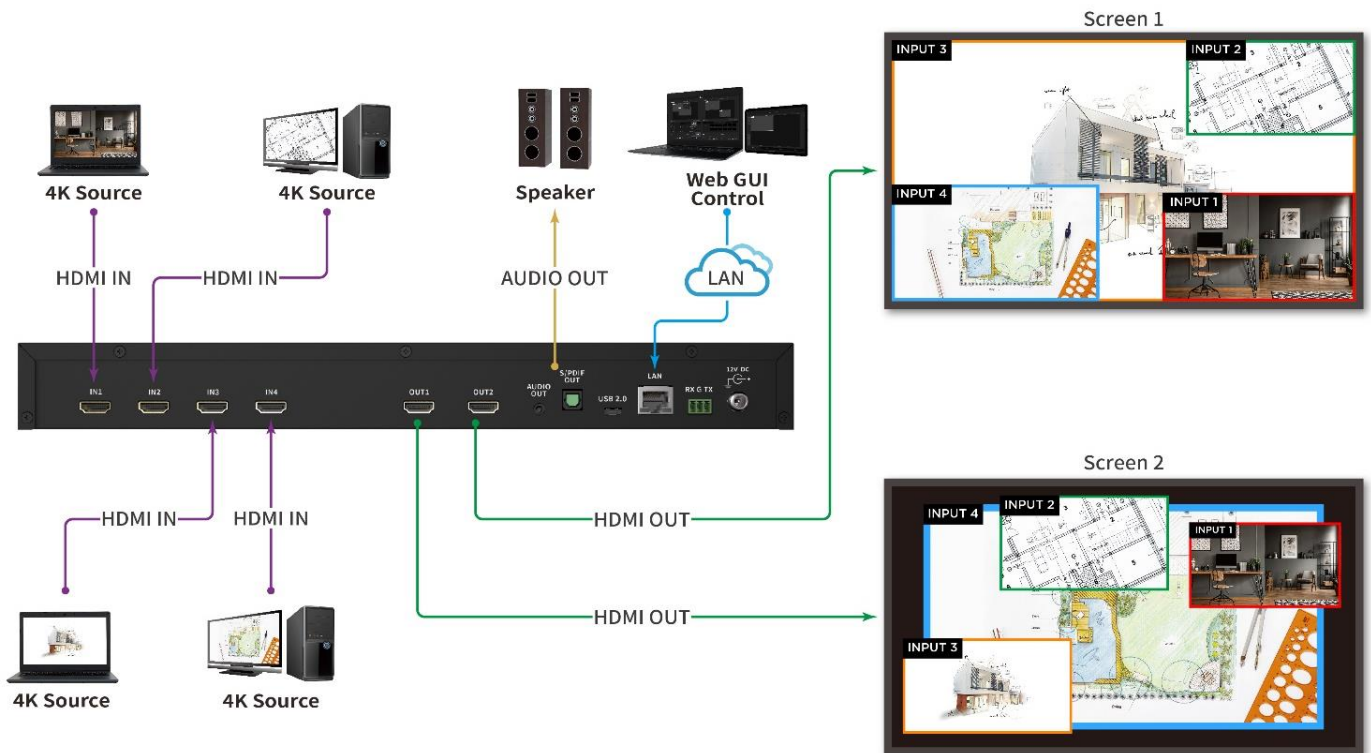
Back Panel



- | | |
|--|---|
| <p>H IN 1~4
HDMI input port. Associate to input channels 1 to 4, respectively</p> <p>I OUT 1~2
HDMI output port. Associated with output 1 and 2 respectively</p> <p>J AUDIO OUT
3.5mm audio output</p> <p>K S / PDIF OUT
S / PDIF audio output</p> | <p>L USB 2.0
For debugging purposes only</p> <p>M LAN
For Ethernet connection
(For Web GUI or tablet APP)</p> <p>N RS-232 (terminal block format)
The order of RS-232 pins is RX, GND, TX
(From the left to the right)</p> <p>O DC 12V
Power port for DC 12V power adaptor
(included)</p> |
|--|---|

CONNECTION DIAGRAM

The MaitreView™ 4KPlus allows the user to connect up to FOUR 4K / UHD multi-video sources which may simultaneously output on TWO 4K / UHD displays.



PACKAGE CONTENTS

- MaitreView™ 4KPlus unit
- Rack-Mount Bracket * 2
- Screws (for Brackets) * 6
- Adaptor: IN:100V-240VAC OUT: DC 12V / 5A LOCK DC JACK
- Quick Start Guide

SYSTEM REQUIREMENTS

Minimum:

- 720p / HD input source
- 1080p / FHD output display

Recommended:

- 4K / UHD input source * 4
- 4K / UHD output display * 2
- Ethernet cable (Cat 5e, for Web GUI and tablet APP) * 1
- Web browser: Google Chrome (latest version)
- For Android tablet APP: Android tablet with Android 7.0
- For iPad APP: iPad with the latest iPad OS version

INSTALLATION

Note: Turn the power off for displays and video sources before beginning the installation.

1. Connect each video source to the input ports respectively.
2. Connect each display to the output ports respectively.
3. Connect the power adapter to the DC 12V power port, and lock the DC power jack. The power LED will turn blue after being connected successfully.
4. **Power on your device:** press the POWER button once, the blue power LED will start to blink for around 30 seconds. After the power LED turns green, the device is ready to use.
5. **Power off your device:** Long press the POWER button for more than 3 seconds, and the power LED will blink in blue for around 20 seconds, and then the device will shut down.

WEB GUI

Connect the LAN port to the ethernet to get the IP address for the device.

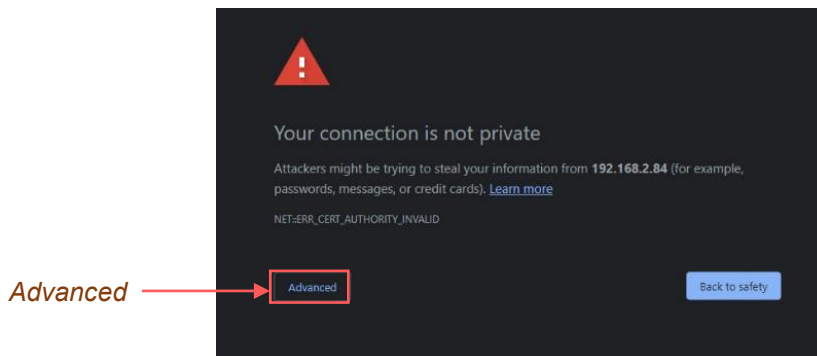
If the device is connected directly to PC, then the IP address will be automatically assigned as: 169.254.xxx.xxx.

To control the device through the Web GUI, type in the IP address shown on the LCM to the web browser,

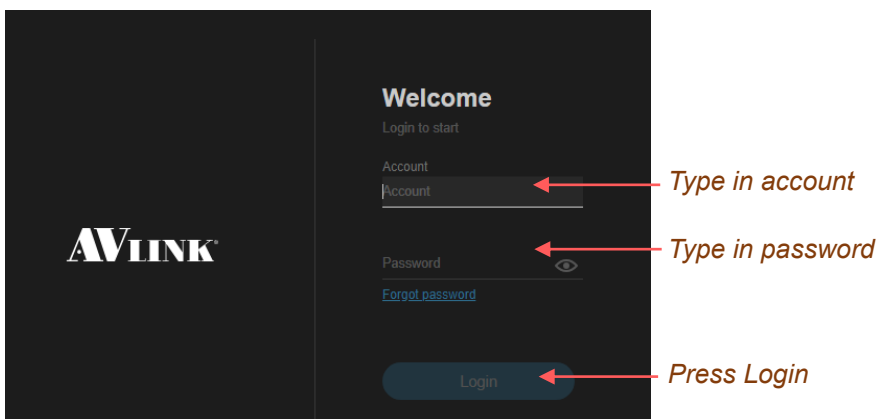
https://xxx.xxx.xxx.xxx


Once successfully connected, the login page will show.

Note: Our system only supports HTTPS with AV LINK's self-signed certificate. You may see the warning of security, press advanced to bypass the security check.



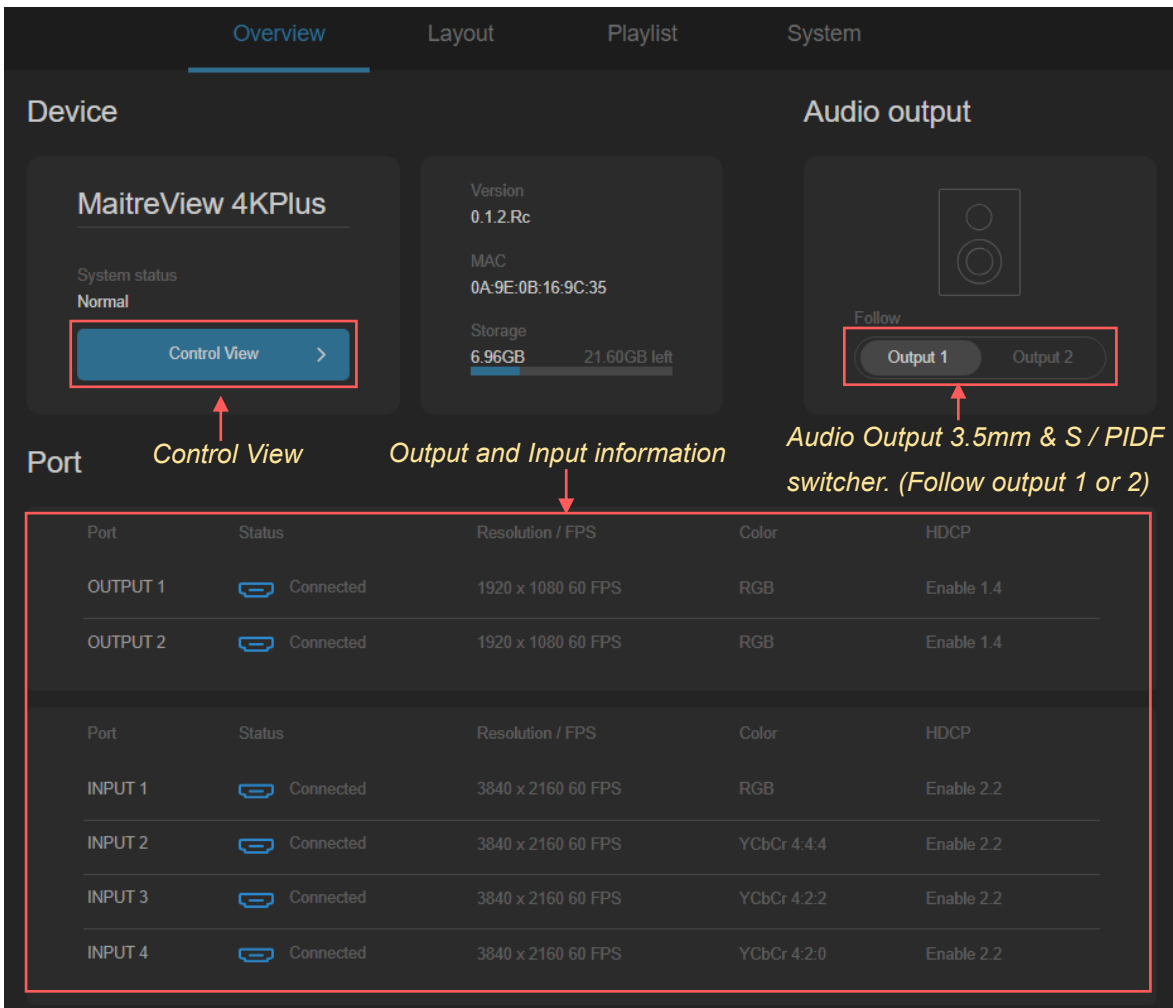
Type the account and password to log in.



 **Note:**
Default account: admin
Default password: admin

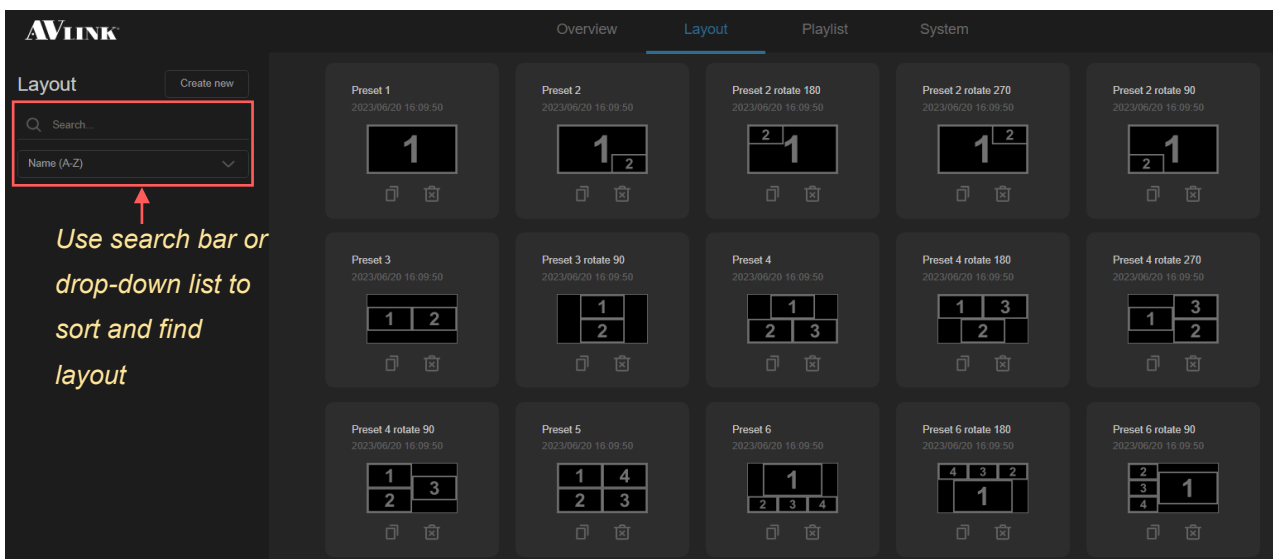
Overview

The Overview page shows the device information such as (device name, status, system version, MAC address, storage, Input & Output information, and the additional audio output (3.5mm & S / PDIF) switcher.



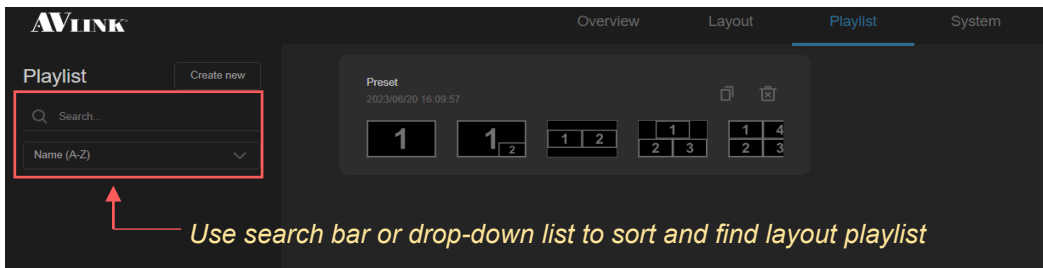
Layout

The Layout page serves the following function: create the customized layout, edit the layout, and shows all layout in the device.



Playlist

The Playlist page serves the following function: create the customized playlist, edit the playlist, and show all playlists on the device.

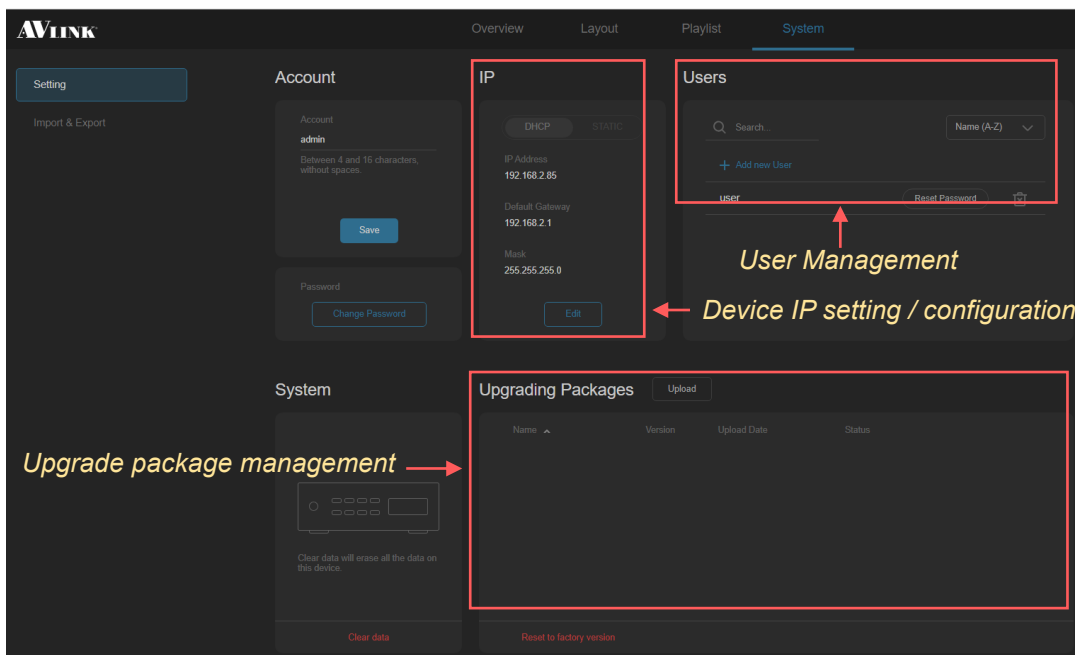


System

The System page serves two main functions: Setting, and Import / Export.

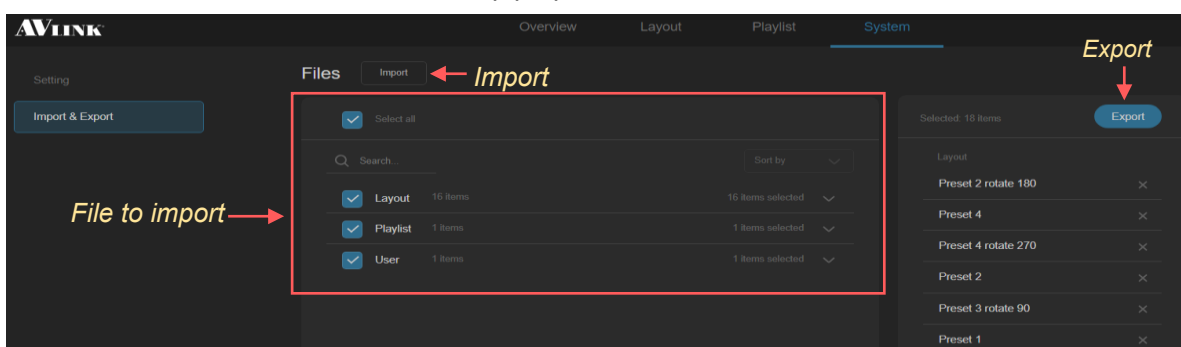
Setting

The Setting subpage shows information for the admin account / password, device IP setting, user management, upgrade package management, and resets the device to the factory version.




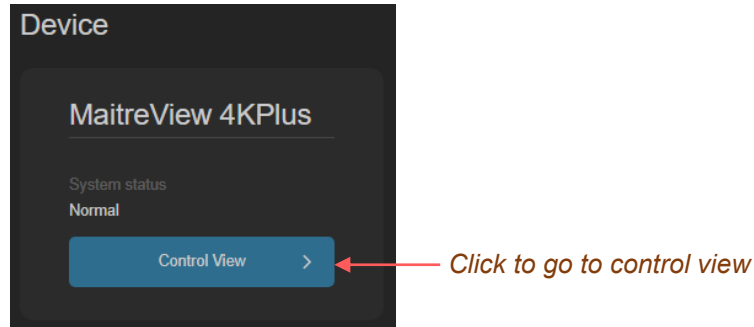
Import / Export

The Import / Export subpage serves the function of importing layouts, playlists, and user configurations from other MaitreView™ 4KPlus devices, or exporting layouts, playlists, and user configurations to other MaitreView™ 4KPlus devices or for backup purposes.

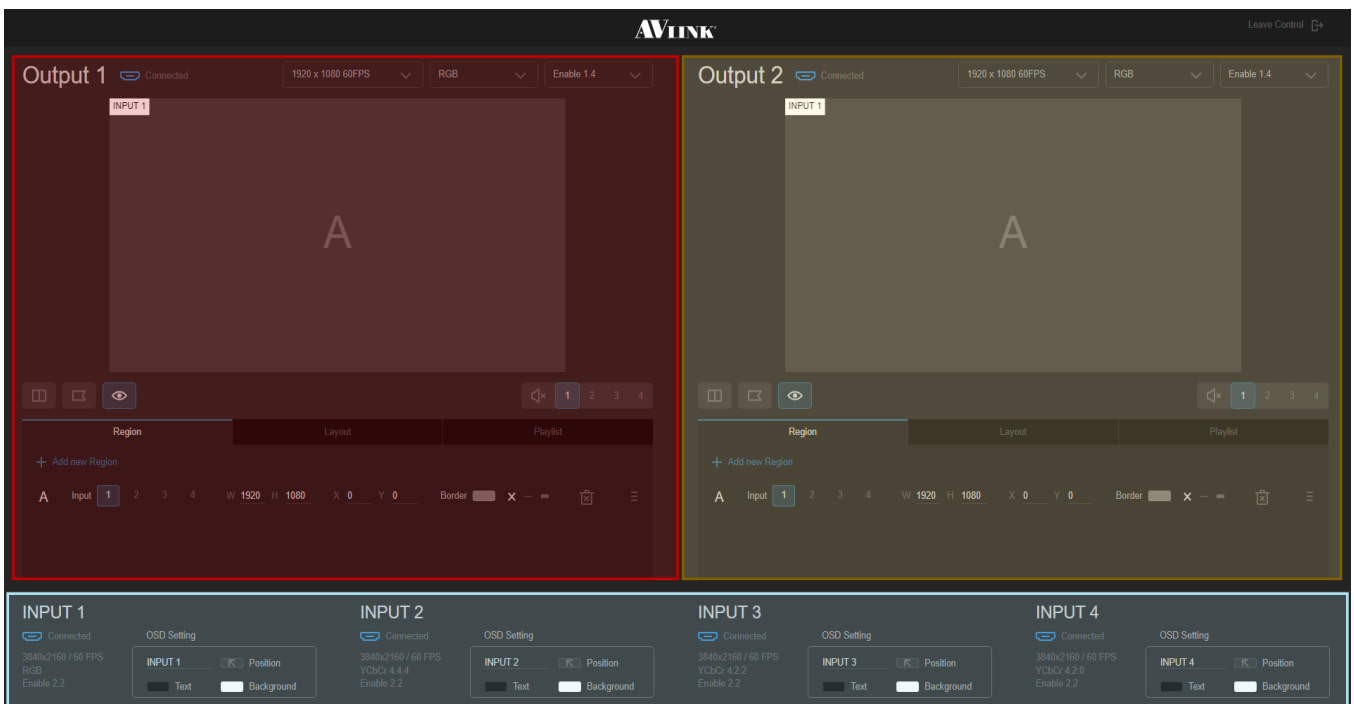


Control View

On the Overview page, the ControlView  button is under the Device section, click on this button to go to the control view.



On the Control View page, you can manage the configuration of each output. Each output has an independent layout with a maximum of 4 regions. You can change configurations of the output port, input OSD, region, layout, and playlist on this page.



For input 1~4, you can edit OSD text, text position on region, text color, and background color.

There are more functions to explore to make the best use of the MaitreView™ 4KPlus, for more detail, please refer to the MaitreView™ 4KPlus user manual.

Specifications

Video Processing											
Technology	MaitreView™										
Performance	Inputs & Outputs up to 4K / 60Hz										
Max. number of the split layer	4 split layers on each output port										
Region	1 per layer, Max 4 layers per output										
Seamless Switch	Available when changing sources or Presets										
Configuration & Control											
Interface	Front panel, Web GUI, tablet APP (Android tablet & iPad)										
Front Panel											
LCM	Display IP & device information (status)										
LED	System Status										
Control Ports											
Ethernet	RJ45 Connector										
Speed	10 / 100 / 1000Mbps										
RS-232	3-pin Terminal Block Header										
Video Inputs											
Input connectors	4 x HDMI – HDMI 1.4~2.0 & HDCP 1.4 & 2.2 compatibility										
Resolution support	<table border="0"> <tr> <td>4096x2160p, 30 / 50 / 60Hz</td> <td>SXGA+ 1400x1050, 60Hz</td> </tr> <tr> <td>3840x2160p, 30 / 50 / 60Hz</td> <td>UVGA 1600x1200, 60Hz</td> </tr> <tr> <td>1920x1080p, 60Hz</td> <td>WXGA 1280x800, 60Hz</td> </tr> <tr> <td>1280x720p, 60Hz</td> <td>WSXGA 1680x1050, 60Hz</td> </tr> <tr> <td></td> <td>WUXGA 1920x1200, 60Hz</td> </tr> </table>	4096x2160p, 30 / 50 / 60Hz	SXGA+ 1400x1050, 60Hz	3840x2160p, 30 / 50 / 60Hz	UVGA 1600x1200, 60Hz	1920x1080p, 60Hz	WXGA 1280x800, 60Hz	1280x720p, 60Hz	WSXGA 1680x1050, 60Hz		WUXGA 1920x1200, 60Hz
4096x2160p, 30 / 50 / 60Hz	SXGA+ 1400x1050, 60Hz										
3840x2160p, 30 / 50 / 60Hz	UVGA 1600x1200, 60Hz										
1920x1080p, 60Hz	WXGA 1280x800, 60Hz										
1280x720p, 60Hz	WSXGA 1680x1050, 60Hz										
	WUXGA 1920x1200, 60Hz										
Video Output											
Output connectors	2 x HDMI – HDMI 1.4~2.0 & HDCP 1.4 & 2.2 compatibility										
Resolution support	<table border="0"> <tr> <td>4096x2160p, 30 / 50 / 60Hz</td> </tr> <tr> <td>3840x2160p, 30 / 50 / 60Hz</td> </tr> <tr> <td>2560x1080p, 50 / 60Hz</td> </tr> <tr> <td>1920x1080p, 50 / 60Hz</td> </tr> </table>	4096x2160p, 30 / 50 / 60Hz	3840x2160p, 30 / 50 / 60Hz	2560x1080p, 50 / 60Hz	1920x1080p, 50 / 60Hz						
4096x2160p, 30 / 50 / 60Hz											
3840x2160p, 30 / 50 / 60Hz											
2560x1080p, 50 / 60Hz											
1920x1080p, 50 / 60Hz											
Analog Audio Output											
Connector	3.5mm phone Jack										
Format	Analog output										
Supported sampling rate	48kHz										
Sample size	24-bits										
Supported channels	Stereo 2 channel										

Digital Audio Output	
Connector	Toslink
Format	Digital output
Supported sampling rate	48kHz
Sample size	24-bits
Supported channels	S / PDIF
Mechanical	
Dimensions (L x W x H)	383 mm x 170 mm x 43 mm
Net Weight	2.017kg
Housing	SGCC (Galvanized steel plate)
Environmental	
Operating Temperature	0° to +40°C (+32° to +104°F)
Storage Temperature	-10° to +70° C (+14° to +158° F)
Power Supply	
External	IN:100V-240VAC OUT: DC 12V / 5A
Connector	Locking
Power consumption	40W (Max consumption during machine operation)
Accessories included	
The MaitreView™ 4KPlus unit	x 1
Power Adapter	x 1
Rack-Mount Bracket	x 2
Quick Start Guide	x 1