

# HDMI/VGA Extender

## AVLINK™



**WVH-EPL**



**WVH-EPR**

## USER MANUAL WVH-EPX

**V1.0**

### Package Contents-

- 1x WVH-EPL and WVH-EPR Unit
- 1 user manual
- 1x Power adapter DC 48V (With 1x2 Pole Captive Screw Socket)
- 4x screws
- 2x Female 1x3 Pole Captive Screw Socket
- 1x IR receiver cable
- 1x IR blaster cable (Peak Wavelength 940nm)

Anything missed, please contact with your vendor.

## Features

- HDBaseT™ delivers Ultra HD (4K2K@30Hz with YCbCr 4:4:4 and 4K2K@60Hz with YCbCr 4:2:0)
- Fully compliant with HDMI 1.4, and compatible with HDMI 2.0 (4K2K 60Hz with 4:2:0 coding)
- Supports all standard formats of audio, such as Dolby Digital, DTS, Dolby TrueHD, DTS HD-Master Audio and more.
- VGA IN supports up to 1080P@60 (12bits)
- Supports Power over Cable
- HDCP 1.x,2.2 compliant.
- All frequency of IR receiver and emitter (bi-direction).
- RS-232 for upgrade firmware
- Use CAT.5/5e/6 cable to install easily.

## Specifications

Function	WVH-EPL	WVH-EPR
HDMI Input Connector	1 (A-Type Female)	NONE
HDMI Output Connector	NONE	1 (A-Type Female)
VGA Input Connector	1	NONE
Source select (HDMI/VGA)	LED SW X1 (BLU/YEL)	
LINK	RJ-45 Connector x 1	
IR IN	3.5ψ Stereo Jack x 1	
IR OUT	3.5ψ Stereo Jack x 1	
Audio In	3.5ψ Stereo Jack x 1	NONE
Max. Resolution	4KX2K@60 4:2:0 (HDMI IN), 1080P@60 12bits(VGA IN)	
Power Adapter (Min.)	DC 48V 0.28A (1x2 Pole Captive Screw Socket)	NONE
Cable Distance	Cat.6@100 meters (Max.)	
RS-232 Connector	1X3 Pole Captive Screw Socket x 1	
Housing	Metal	
Weight	265g	260g
Dimensions (LxWxH)	107x92x45mm	107x92x39mm

## FRONT VIEW WVH-EPL



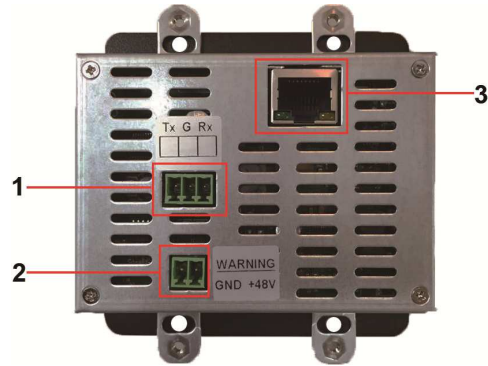
1. Source select (HDMI/VGA)
2. 1x HDMI Input Connector (A-Type Female)
3. IR Input
4. IR Output
5. VGA Input Connector
6. Audio Input

## WVH-EPR



1. 1x HDMI Output Connector (A-Type Female)
2. IR Input
3. IR Output

## REAR VIEW WVH-EPL



1. RS-232 Connector (1X3 Pole Captive Screw Socket)
2. DC 48V (1x2 Pole Captive Screw Socket)
3. Link (RJ-45 Connector)

## WVH-EPR



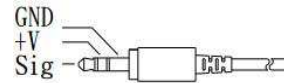
1. RS-232 Connector (1X3 Pole Captive Screw Socket)
2. Link (RJ-45 Connector)

## Installation

1. Turn off the HDMI source and HDMI display.
2. Connect the HDMI/VGA cable between the HDMI/VGA source and the "HDMI/VGA IN" port of WVH-EPL.
3. Connect the HDMI cable between the HDMI display and the "HDMI OUT" port of WVH-EPR.
4. Connect the CAT.5/5e/6 cables between the WVH-EPL "LINK" port and the WVH-EPR "LINK" port of extender.
5. Connect the power cord of WVH-EPL.
5. Turn on the HDMI/VGA source and display.

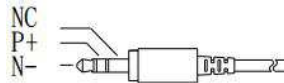
## IR Receiver Cable Directions:

Put it into the WVH-EPL/R "IR IN" port and place the IR Receiver Cable, so that you can point to it easily with your IR remote controller.

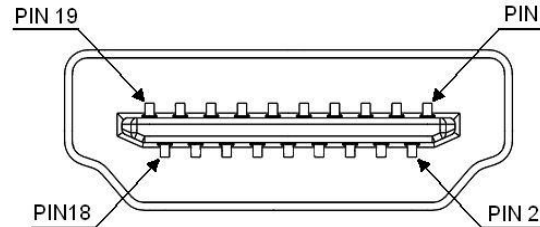


## IR Blaster Cable Directions:

Plug IR blaster cable plug into WVH-EPL/R "IR OUT" port. It sits in front of the DVD receiver's IR sensor, which is located on the front-panel.



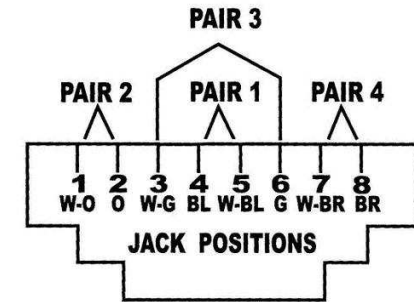
## Technical Specifications Output Signal



Pin #	Signal	Pin #	Signal
1	TMDS Data 2+	11	TMDS Clock Shield
2	TMDS Data 2 Shield	12	TMDS Clock -
3	TMDS Data 2-	13	CEC
4	TMDS Data 1+	14	Reserved (N.C. on device)
5	TMDS Data 1 Shield	15	SCL
6	TMDS Data 1-	16	SDA
7	TMDS Data 0+	17	DDC/CEC Ground
8	TMDS Data 0 Shield	18	+5 Power
9	TMDS Data 0-	19	Hot Plug Detect
10	TMDS Clock+		

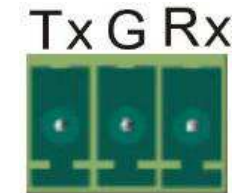
## Wiring Information & Coding

Conductor Identification	RJ-45 Pin Assignment	Color Code for Conductor
Pair 1	5	White-Blue
	4	Blue
Pair 2	1	White-Orange
	2	Orange
Pair 3	3	White-Green
	6	Green
Pair 4	7	White-Brown
	8	Brown



## TxGRx (only upgrade firmware):

Use the transmission line with RS-232 to connect the PC for upgrade firmware(local and remote).



Rx /G /Tx:

Rx: Receive RS232-level signal pin. (data in)

G: GND

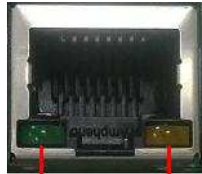
Tx: Transmit RS232-level signal pin. (data out)

## Power Connector:

**GND +48 V**



## OUTPUT LED:



**FW LINK**

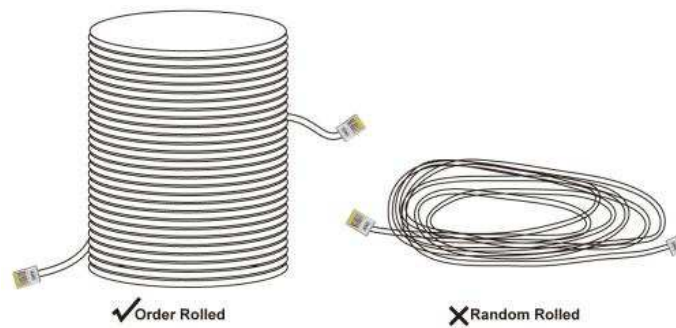
**FW:** When blinking, this LED indicates that the unit's firmware has been loaded, and that the system is operating normally.

**LINK:** When lit, this LED indicates that an HDBaseT connection has been established between the TX and the RX boards over the CATx cable.

## Note

However sometimes, especially in demonstrations or in a lab environment, the cable is rolled randomly in small turns for convenience. The randomly rolled UTP cable suffers additional signal impairments (compared to a straight cable) and therefore the maximal operating reach might be reduced.

Rolling a CAT5E cable around a 70cm fixed diameter plastic drum has just a minor effect on the FEXT (Far End Cross Talk) when compared to a fully stretched cable.



© C&C TECHNIC TAIWAN CO., LTD. All rights reserved.

### Trademarks:

All the companies, brand names, and product names referred to this manual are the trademarks or registered trademarks belonging to their respective companies.